

Tuesday!

Setting up Money Corrected Milk

First in a two-part series on Money Corrected Milk.

This week we wanted to share this post on Money Corrected Milk (MCM) from Agri-Basics featuring Darwin Stoner from Lancaster DHIA. (<http://www.agribasics.com/money-corrected-milk-maximizes-profits/>).

MCM is a milk check based concept that reflects revenue generated per cow based on how the dairy is paid for milk. Users must understand their milk check in order to enter data correctly so PCDART can accurately compute MCM. The revenue

generated by a cow is determined by both milk and component lbs and their respective market prices.

Cows with higher MCM are generating more revenue per day, so ranking by MCM is identical to ranking by revenue per day. It can only be computed if fat and protein are known, so individual component testing is necessary.

Note: To get any benefit from this calculation, you MUST have test day component results and you must be using PCDART.

Next week, we'll show how MCM can be used as part of your culling program.

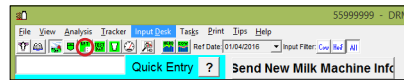
Setup

1. Click Input Desk or the book icon.
2. Click Money Corrected Milk
3. Select whether milk is sold in a component or fluid market.
4. Enter the data as shown on the milk check. An asterisk indicates a required field.
 - a. Minus signs are automatically added if a number is a deduction from the milk check.
 - b. These values will be stored and used in the MCM calculation until changed.
5. Feed costs can be entered to generate Income Over Feed Cost
 - a. A single average feed cost for all milking cows, or feed cost by group, can be entered
 - b. If you need help determining the cost of dry matter, we suggest consulting a nutritionist.

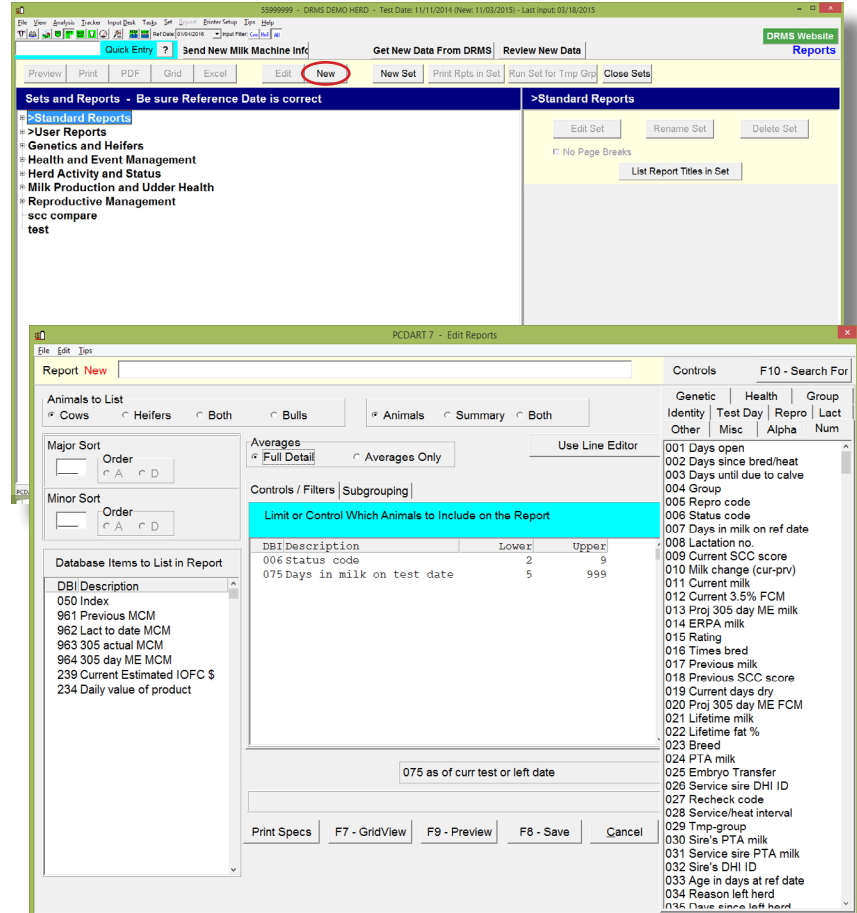
The screenshot shows the PCDART software interface. The 'Input Desk' window is open, displaying various input fields for animal procedures. The 'Money Corrected Milk' dialog box is also open, showing fields for Milk Price (Component Market, Fluid Market) and Feed Costs (Not reported, All Milking Cows, By Group). The 'Money Corrected Milk' button is highlighted in the 'Input Desk' window.

Create Reports

1. Click the **Reports** button.



2. Click **New**



3. Select which animals to include and the level of detail you would like.

4. Enter the **Database Items** you would like to include in the report.

The following database items (DBIs) related to MCM are available for adding to PCDART's user reports:

- DBI

- 050 Index
- 960 Current MCM
- 961 Previous MCM
- 962 Lact to date MCM
- 963 305 actual MCM
- 964 305 day ME MCM
- 239 Income Over Feed Cost

~ This DBI uses the feed cost reported in the MCM form. If not reported, the DBI will not display correctly.

- 234 – Daily Value of Product

~ This DBI will use the milk component prices reported on the MCM input form. If not reported, it will use milk prices reported by the DHI technician.

- Control / Filter

- 006 Status Code (lower 2, upper 9)
- 075 DIM on TD (lower 5, upper 999)

5. Click F7-Gridview or F9-Preview to see your report.

6. If viewing in Grid View you can click on the heading of each column to sort by index #, milk or MCM from low to high or click a 2nd time for high to low.